



ROYAL NORTH SEA YACHT CLUB

With the kind collaboration of the

RYCO

WOS

VVW I&O

OSRC



And the security team of the R.Y.C.B. and the K.L.Y.C.

25 YEAR SAILING FOR OSTEND

1st - 3th of May 2009

ORGANIZING AUTHORITY

RNSYC : Montgomerykaai 1, 8400 OOSTENDE

E-mail: info@rnsyc.be

TEL +32 (0)59 430 694 FAX +32 (0)59 51.32.70

URL : www.rnsyc.be



1 RULES

- 1.1 The regatta will be governed by the rules as defined in *The ISAF Racing Rules of Sailing 2009-2012*.
- 1.2 The prescriptions of the Belgian national authority (KBYV-FRYB) will apply.
- 1.3 The International Class Rules and regulations will apply.
- 1.4 This Notice of Race and the Sailing Instructions (In the event of a conflict between the Notice of Race, the Class Rules and the Sailing Instructions, the Sailing Instruction shall prevail).
- 1.5 If there is a conflict between languages the English text will take precedence.

2 ADVERTISING

Advertising will be restricted to Category A (see ISAF regulation 20).

3 ELIGIBILITY AND ENTRY

3.1 The regatta is open to

One Person Dinghies: Contender, Europe, Finn, Flash, Laser Std, Laser Radial, Laser4.7, OK Yole, Splash...

Two-Person Dinghies: 420, 470, 490, 505, Fireball, FJ, Ponant, Snipe, ...

and all other centreboard classes

Wind - surfers (see 3.3) who will sail on the North Sea before Ostend

Cadet, Spirou and Optimist (see 3.2) who will sail on the Spuikom in Ostend.

- 3.2 Cadet, Optimist and Spirou see additional instructions by W. O. S.
- 3.3 Sailboards : see additional instructions by VVW inside - outside.
- 3.4 Only eligible boats for which a Entry form (available on <http://www.rnsyc.be/ostend/en/calendar.asp>) has been received, registration has been completed, and the full entry fee has been paid are entitled to race.
- 3.5 ISAF eligibility requirements (see Rule 75) shall apply.
- 3.6 All Belgian owners must be member of the National Class Association.
- 3.7 All Belgian helmsmen and crew must be bearer of a Belgian Sailing License.

4 ENTRIES AND REGISTRATION

4.1 Required fees are as follows:

Class	Fee	
Single-handed boats at registration	€ 60 prepayment	or € 70
Double-handed boats at registration	€ 80 prepayment	or € 90

Prepayment can be done by bank transfer before April 25th, 2009

ROYAL NORTH SEA YACHT CLUB
Montgomerykaai 1
B-8400 OOSTENDE
Account NR: 384-0051829-18
IBAN: BE50 3840 0518 2918



BIC: BBRUBEBB

Sailboards	€ 5
Spirou	€ 10
Cadet	€ 10
Optimist	€ 20 (2 days)

- 4.2 In order to be valid, each entry should include
- the original "entry form"
 - the fee is to be paid at least while registration.
 - a copy of measurement certificate
 - a copy of the insurance policy (see insurance § 13)
- 4.3 The specific Sailing instructions will be handed over after the registration and payment.

5 SCHEDULE OF RACES

5.1 Registration:

All Classes except Cadet, Optimist, Spirou and Sailboards :

Thursday April 30 th	From 18.00 h To 20.00 h
Friday May 1 st	From 09.00 h To 10.00 h

Cadet and Spirou :

Sunday May 3 rd	From 09.00 h To 10.00 h
----------------------------	-------------------------

Sailboards :

Sunday April 26 th	From 09.00 h To 10.00 h
-------------------------------	-------------------------

Optimist :

Saturday May 30 th	From 08.30 h To 09.30 h
-------------------------------	-------------------------

5.2 Dates of racing:

All Classes except Cadet, Optimist, Spirou and Sailboards :

Friday May 1 st	First warning signal 11.55 h
Saturday May 2 nd	First warning signal 09.55 h
Sunday May 3 rd	First warning signal 11.55 h

Cadet and Spirou :

Sunday May 3	First warning signal 09.55 h
--------------	------------------------------

Sailboards :

Sunday April 24 th	First warning signal 09.55 h
-------------------------------	------------------------------

Optimist :

Saturday May 30 th	First warning signal 09.55 h
Sunday May 31	First warning signal 09.55 h

5.3 Number of races scheduled:

Class	Number
Cadet and Spirou :	5
Optimist :	9
Sailboards :	6
All other classes :	10

6 MEASUREMENTS

Each boat shall produce a valid measurement certificate.

7 SAILING INSTRUCTIONS

The sailing instructions will be available at registration.

8 VENUE

- 8.1 Location : The race will take place in Ostend, in open sea, except for Cadet, Spirou and Optimist who will race on the Spuikom



- 8.2 Launching of the boats will be from the slipway launching area on the East bank of the harbour, near the boat and trailer parking.
- 8.3 A free crossing will be arranged throughout de venue from the R. N. S. Y. C. to the parking and launching area (also during the social events)
- 8.4 Support boats may go afloat by using 2 different ramps or by a crane up to 2000 kg after registration
- 8.5 Attachment 1 shows a detailed plan of the launching areas en boat parking area
- 8.5 Sailboards : see special instructions by VVW Inside - Outside Schietbaanstraat 100, 8400 Oostende please visit <http://www.vvwinout.be/> or phone +32(0)59 50 65 05
- 8.6 Cadet, Spirou, Optimist : see special instructions by W. O. S. Spuikom, Vicognedijk 30, 8400 Ostende, please visit <http://www.spuikom.be/> or phone +32(0)59 +32(0)59 59 35 64

9 THE COURSES

The courses to be sailed will be of Trapezoid type for all classes.

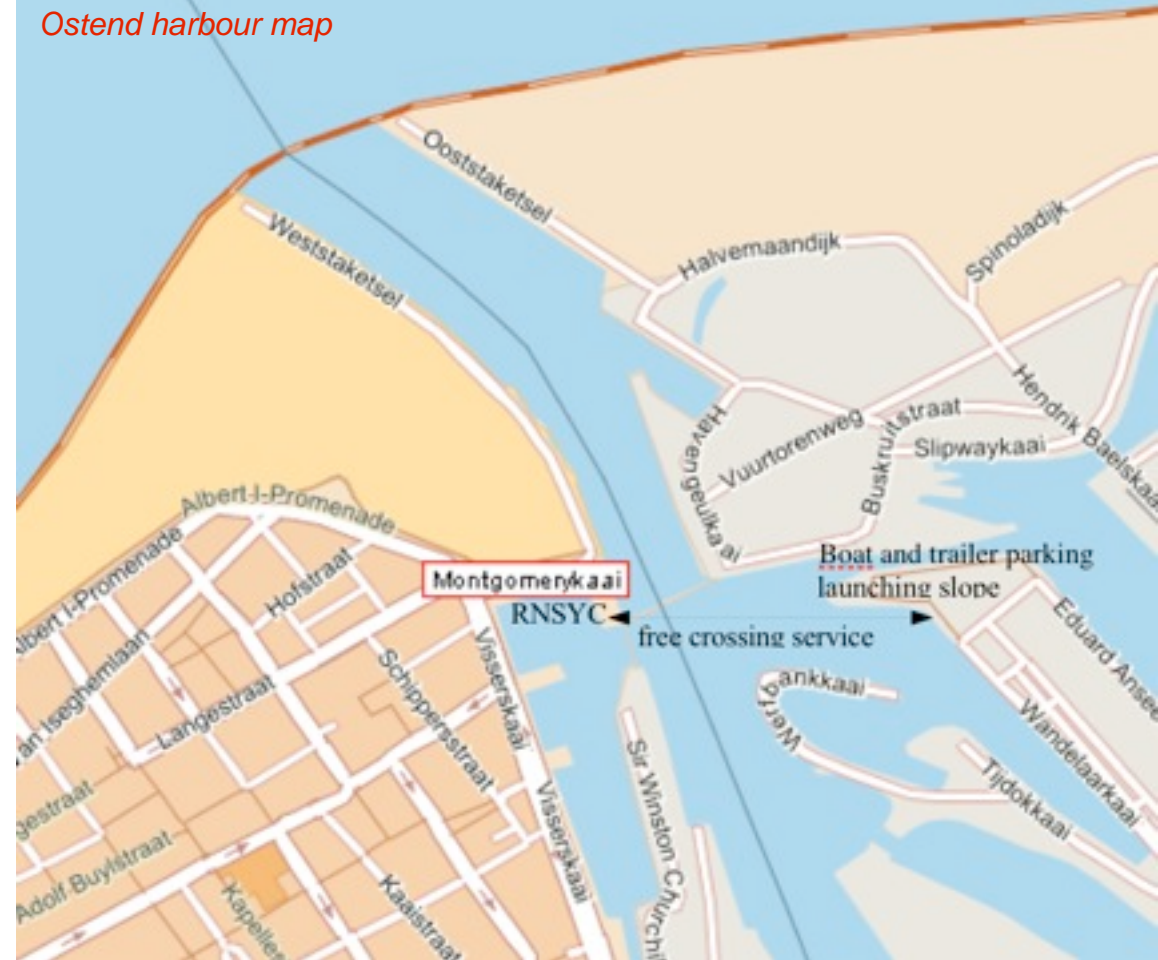
10 PENALTY SYSTEM

The rules 44.1 and 44.2 will apply

11 SCORING

- 11.1 The Low Point System of RRS Appendix A will apply
- 11.2 Three (3) races are required to be completed to constitute a series.
- 11.3 (a) When fewer than 4 races have been completed, a boat's series score will be the total of her race scores.
 (b) When from 4 to 8 races have been completed, a boat's series score will be the total of her race scores excluding her worst score.
 (c) When 9 or more races have been completed, a boat's series score will be the total of her race scores excluding her two worst scores.

Ostend harbour map



- 12 **SUPPORT BOATS** Support boats shall register before going afloat and may be requested to fly an identification flag.
- 13 **BERTHING**
- 13.1 Ample parking space is available near the launching slope on the East bank of the harbour. Parking instructions of the Beach masters are strictly to be followed.
- 13.2 A number of Motor homes may be parked on th Montgomerykaai alongside the dock (with electricity and water supply)

14 PRIZES

- 14.1 Prizes will be given for 25% best in each class and a souvenir for each participant.
- 14.2 A free passage service will bring participants to the other shore and back for the prize-giving ceremony at the RNSYC.

15 DISCLAIMER OF LIABILITY

Competitors participate in the regatta entirely at their own risk. See rule 4, Decision to Race. It is for the competitor to decide whether she is fit to sail in the conditions in which she will find herself. By going to sea, the yacht confirms that she is fit for those conditions and her crew is competent to sail and compete in them. The organising authority will not accept any liability for material damage or personal injury or death sustained in conjunction with or prior to, during, or after the regatta.

16 INSURANCE

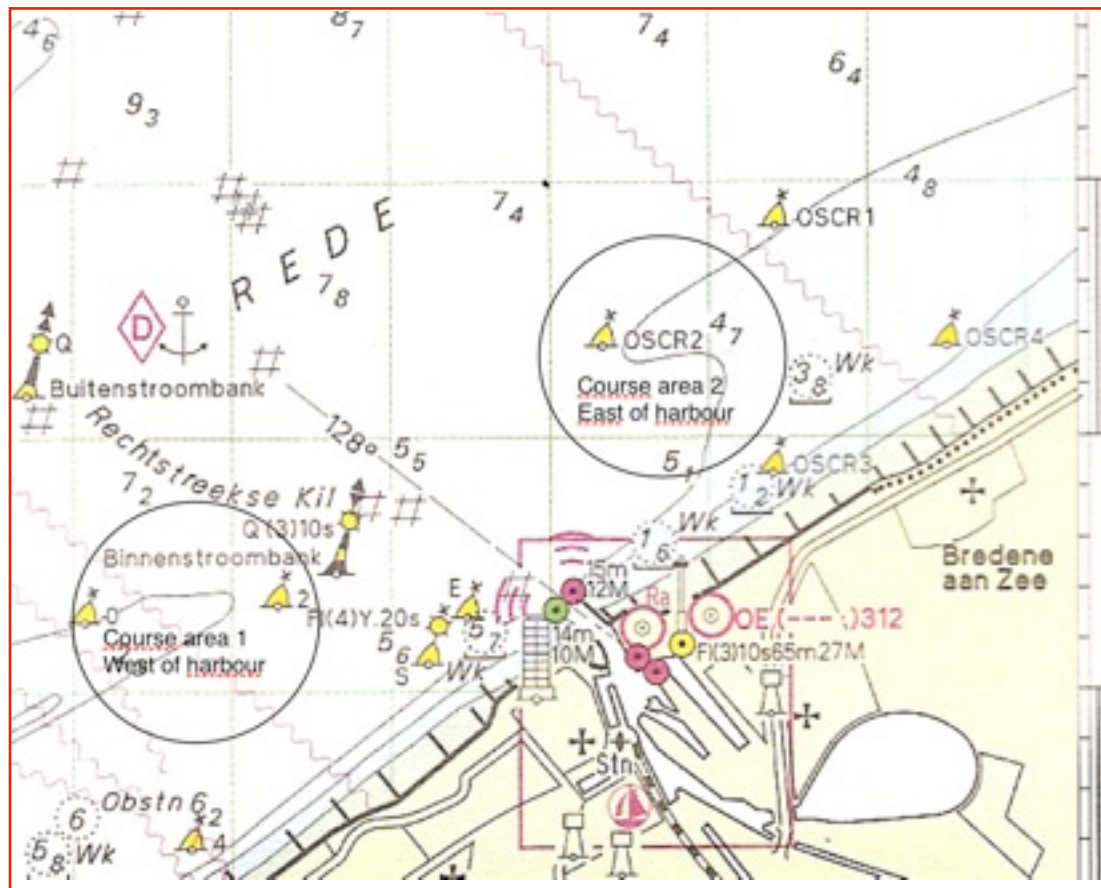
- 16.1 Each participating boat shall be insured with valid third-party liability insurance with a minimum cover of 500000€. The organisers will request a written proof of insurance at the time of registration.
- 16.2 Each youngster shall designate in writing the adult who shall be in attendance and accept ultimate responsibility for the personal safety and conduct of the competitor. If possible this person's mobile phone-number will be indicated on the inscription form.

17 SOCIAL EVENTS

Friday May 1 st	19.30 h:	Reception
Saturday May 2 nd	19.30 h:	Sailors Dinner at 15€

18 WIFI AREA

The North Sea Royal Yacht Club offers you FREE wireless internet access in and around the club house



Toerisme Oostende vzw
Monacoplein 1, 8400 Oostende
Tel: +32(0)59 701 199
Fax: +32(0)59 704 035
URL : <http://www.toerisme-ostende.be>
Email : info@toerisme-oostende.be

Youth hotel: (200 meters from beach)
Tel: +32(0)59 805 297
Fax: +32(0)59 809 274
URL: www.deploate.com
Email: deploate@pandora.be

RNSYC
Montgomerykaai, 1, 8400 Oostende
TEL +32(0)59 430 694
FAX +32(0)59 513 270
URL: www.rnsyc.be
E-mail: info@rnsyc.be